

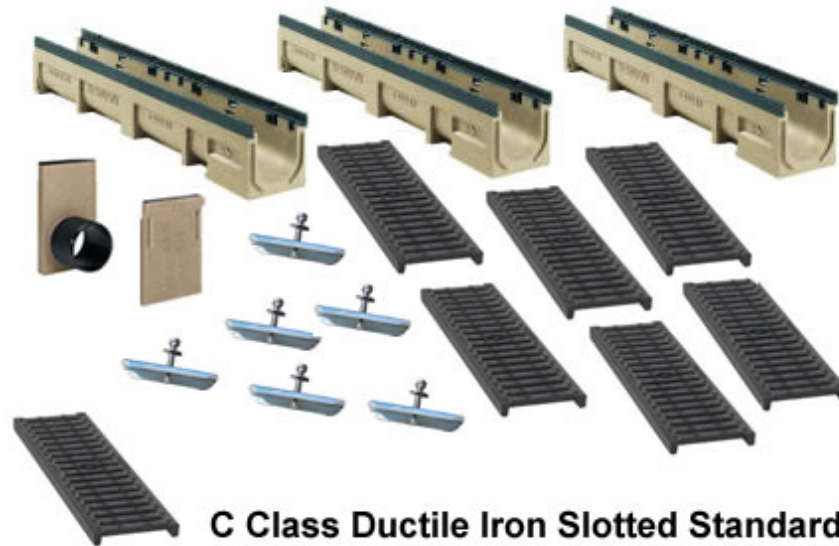
**CPS604 Complete Kit**

Series

**CPS604**

Cover Sheet

EN1000 Series

**4" Wide EN1000 Polymer Concrete Integrated Ductile Iron Edge  
Trench Drain Kit 10 - 99 Foot Complete**

**C Class Ductile Iron Slotted Standard**
**New Ductile Iron Edge Commercial Trench Drain  
4 Inch Wide - C Class Ductile Iron Grates Standard**
**Complete system - Each Kit Includes:**

Specified number of 1 meter sections of trench drain

Specified number of Ductile Iron Slotted Grates

Specified Number of Galvanized Locks

1 - Solid End Cap and 1 - 4" End Outlet

**Key advantages of EN1000 Heavy Duty Trench Drain:**

- Integral Cast iron protected edge designed to withstand extreme loads .
- Built in PROFIX locking recess ensures positive grate securement .
- Exterior lateral ribs "lock" channel into surrounding concrete
- Lock assembly allows uninterrupted channel access during cleaning .

**MEA**

Quality engineered trench drain system

1-877-903-7246



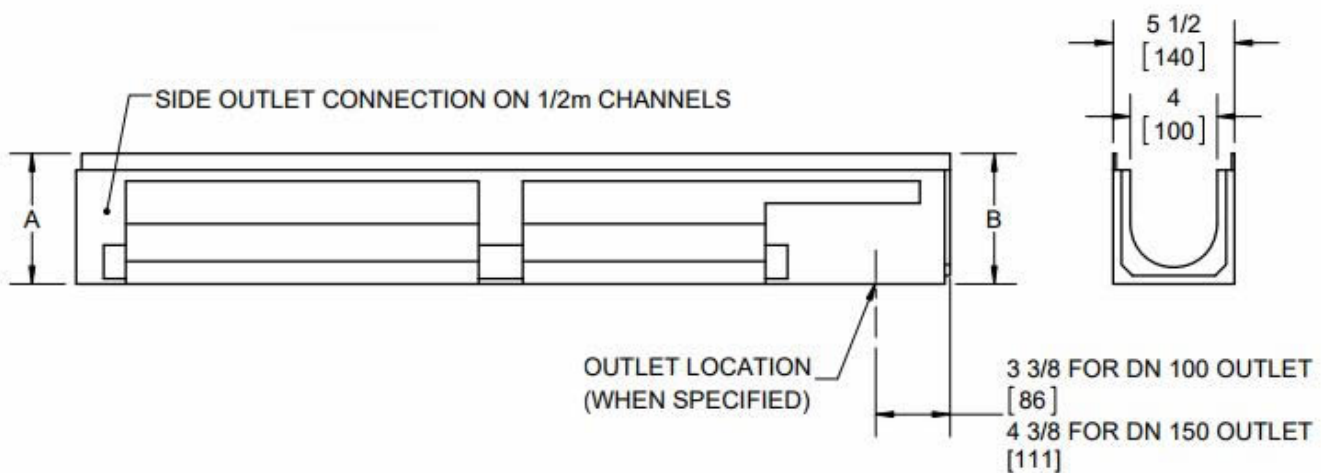
www.trenchdrainsupply.com

Number	Series
157201	CPS604 Polymer Concrete Drainage Channel EN1000 Series



	DIM "A"	DIM "B"
EN1000.0	5.9	5.9
EN1000.1	5.9	5.9
EN1005.0	6.9	6.9
EN1005.1	6.9	6.9
EN1010.0	7.9	7.9
EN1010.1	7.9	7.9
EN1015.0	8.9	8.9
EN1015.1	8.9	8.9
EN1020.0	9.8	9.8
EN1020.1	9.8	9.8

	DIM "A"	DIM "B"
EN1001	5.9	6.1
EN1002	6.1	6.3
EN1003	6.3	6.5
EN1004	6.5	6.7
EN1005	6.7	6.9
EN1006	6.9	7.1
EN1007	7.1	7.3
EN1008	7.3	7.5
EN1009	7.5	7.7
EN1010	7.7	7.9
EN1011	7.9	8.1
EN1012	8.1	8.3
EN1013	8.3	8.5
EN1014	8.5	8.7
EN1015	8.7	8.9
EN1016	8.9	9.1
EN1017	9.1	9.3
EN1018	9.3	9.5
EN1019	9.5	9.7
EN1020	9.7	9.8



Manufacturer	Specification
<p>Quality engineered trench drain system</p>	<p>MEA-JOSAM EN1000 SERIES POLYMER CONCRETE DRAINAGE CHANNEL WITH BUILT-IN EDGE PROTECTION OF DUCTILE IRON. LOCK DEVICES AVAILABLE IN 8-POINT OR PROFIX LOCK. SUPPLIED BY TRENCH DRAIN SUPPLY.</p>

DISCLAIMER - The customer and the customer's architects, engineers, consultants, and other professionals are completely responsible for the selection installation and maintenance of any product purchased from Trench Drain Supply and/or its manufacturers. TRENCH DRAIN SUPPLY MAKES NO WARRANTY, EXPRESS OR IMPLIED, AS TO THE SUITABILITY, DESIGN, MERCHANTABILITY, OR FITNESS OF THE PRODUCT FOR CUSTOMERS APPLICATION. The drawing and information provided remain the property and copyright of the manufacturer listed. The manufacturer reserves the right to modify specification without notice.

1-877-903-7246



www.trenchdrainsupply.com

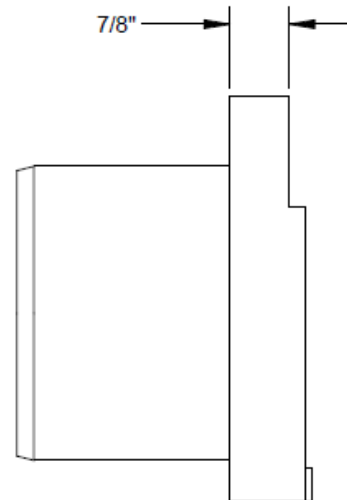
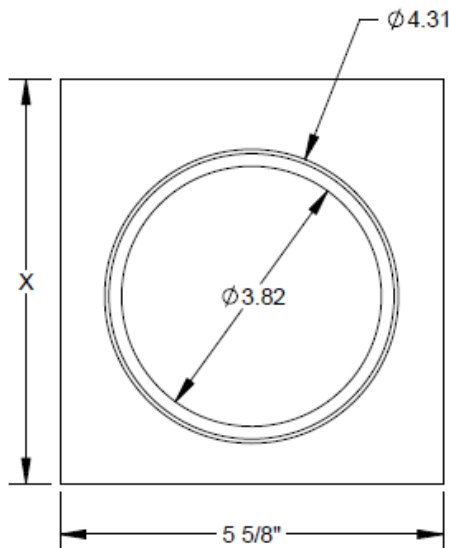
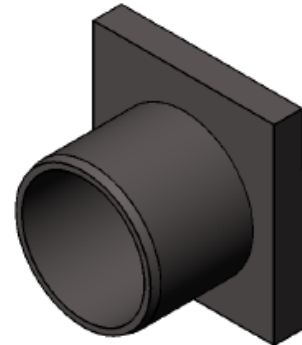
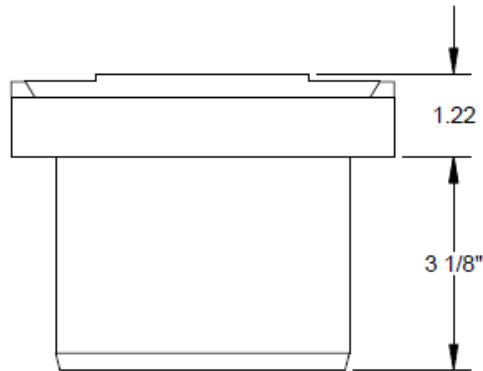
<b>Number</b>  153371	<b>Series</b>  CPS604 EN1000 Series End Cap
<div data-bbox="386 642 680 701"></div> <div data-bbox="971 428 1396 705"></div> <div data-bbox="258 791 1364 1535"></div>	
<b>Manufacturer</b>  <div data-bbox="155 1707 615 1829"><p>Quality engineered trench drain system</p></div>	<b>Specification</b>  MEA-JOSAM ENDCAP FOR EN1000 SERIES POLYMER CONCRETE TRENCH DRAIN SYSTEM. CAN BE USED FOR CHANNEL START OR END. SUPPLIED BY TRENCH DRAIN SUPPLY.
<p>DISCLAIMER - The customer and the customer's architects, engineers, consultants, and other professionals are completely responsible for the selection installation and maintenance of any product purchased from Trench Drain Supply and/or its manufacturers. TRENCH DRAIN SUPPLY MAKES NO WARRANTY, EXPRESS OR IMPLIED, AS TO THE SUITABILITY, DESIGN, MERCHANTABILITY, OR FITNESS OF THE PRODUCT FOR CUSTOMERS APPLICATION. The drawing and information provided remain the property and copyright of the manufacturer listed. The manufacturer reserves the right to modify specification without notice.</p>	

1-877-903-7246



www.trenchdrainsupply.com

<b>Number</b> <b>153373 / 153375 / 153377</b> <b>153379 / 15338</b>	<b>Series</b> <b>CPS604</b> <b>EN1000 Series End Cap Outlet</b>
---	---



PART NUMBER	"X" DIMENSION
153373	5.94"
153375	6.94"
153377	7.94"
153379	8.94"
153381	9.94"

#### Manufacturer



Quality engineered trench drain system

#### Specification

MEA-JOSAM ENDCAP OUTLETS FOR ALL EN1000 CHANNELS. 4+ OUTLET IS MADE OF HDPE AND INCLUDES A SEALING RING. SUPPLIED BY TRENCH DRAIN SUPPLY.

DISCLAIMER - The customer and the customer's architects, engineers, consultants, and other professionals are completely responsible for the selection installation and maintenance of any product purchased from Trench Drain Supply and/or its manufacturers. TRENCH DRAIN SUPPLY MAKES NO WARRANTY, EXPRESS OR IMPLIED, AS TO THE SUITABILITY, DESIGN, MERCHANTABILITY, OR FITNESS OF THE PRODUCT FOR CUSTOMERS APPLICATION. The drawing and information provided remain the property and copyright of the manufacturer listed. The manufacturer reserves the right to modify specification without notice.

1-877-903-7246



www.trenchdrainsupply.com

<p><b>Number</b></p> <p><b>152411</b></p>	<p><b>Series</b></p> <p><b>152411</b></p> <p>C Ductile Iron Slotted</p> <p>1000 Series Grates</p>
<div data-bbox="118 415 464 697"> </div> <div data-bbox="883 472 1227 541"> </div> <div data-bbox="963 577 1138 636"> <p>SECTION A-A SCALE 1 : 2</p> </div> <div data-bbox="272 766 1320 1312"> <p>19.61</p> <p>9.80</p> <p>1.09</p> <p>.41</p> <p>3.66</p> <p>4.80</p> <p>0.40 DRILL THRU 0.80 DIA DEPRESSED 0.28 DEEP FOR FLAT HEAD MOUNTING SCREW</p> </div> <div data-bbox="305 1381 1453 1587"> <p>A</p> <p>A</p> <p>.81</p> </div>	
<p><b>Manufacturer</b></p> <div data-bbox="157 1707 617 1829"> <p>Quality engineered trench drain system</p> </div>	<p><b>Specification</b></p> <p>MEA 152411 DUCTILE IRON SLOTTED GRATE, DESIGNED TO FIT 100 AND 1000 SERIES CHANNELS. MEETS CLASS C LOADING REQUIREMENTS (56,000 LBS - 1,162 PSI), SUPPLIED BY TRENCH DRAIN SUPPLY.</p>
<p>DISCLAIMER - The customer and the customer's architects, engineers, consultants, and other professionals are completely responsible for the selection installation and maintenance of any product purchased from Trench Drain Supply and/or its manufacturers. TRENCH DRAIN SUPPLY MAKES NO WARRANTY, EXPRESS OR IMPLIED, AS TO THE SUITABILITY, DESIGN, MERCHANTABILITY, OR FITNESS OF THE PRODUCT FOR CUSTOMERS APPLICATION. The drawing and information provided remain the property and copyright of the manufacturer listed. The manufacturer reserves the right to modify specification without notice.</p>	

1-877-903-7246



www.trenchdrainsupply.com

<p><b>Number</b></p> <p><b>152541</b></p>	<p><b>Series</b></p> <p><b>152541</b></p> <p>C Ductile Iron Heel Guard</p> <p>1000 Series Grates</p>
<div data-bbox="165 415 513 697"> </div> <div data-bbox="880 483 1227 554"> </div> <div data-bbox="956 588 1148 648"> <p>SECTION A-A SCALE 1 : 2</p> </div> <div data-bbox="259 774 1281 1341"> </div> <div data-bbox="259 1377 1455 1602"> </div>	
<p><b>Manufacturer</b></p> <div data-bbox="155 1707 617 1829"> <p>Quality engineered trench drain system</p> </div>	<p><b>Specification</b></p> <p>MEA 152541 TRENCH GRATE MADE OF DUCTILE IRON WITH SLOTS. MEETS LOADING CLASS C (56,000 LBS - 1,162 PSI). THIS GRATE IS HEELPROOF AND ADA COMPLIANT - SUPPLIED BY TRENCH DRAIN SUPPLY.</p>
<p>DISCLAIMER - The customer and the customer's architects, engineers, consultants, and other professionals are completely responsible for the selection installation and maintenance of any product purchased from Trench Drain Supply and/or its manufacturers. TRENCH DRAIN SUPPLY MAKES NO WARRANTY, EXPRESS OR IMPLIED, AS TO THE SUITABILITY, DESIGN, MERCHANTABILITY, OR FITNESS OF THE PRODUCT FOR CUSTOMERS APPLICATION. The drawing and information provided remain the property and copyright of the manufacturer listed. The manufacturer reserves the right to modify specification without notice.</p>	



1-877-903-7246




www.trenchdrainsupply.com

<p><b>Number</b></p> <p><b>152521</b></p>	<p><b>Series</b></p> <p><b>CPS604</b></p> <p>D Class Ductile Iron Grate</p>
<div data-bbox="867 405 1390 724" data-label="Image"> </div> <p data-bbox="272 653 852 703">NOTE: FREE AREA IS 31 SQ. IN. PER 1/2 METER GRATE</p> <div data-bbox="254 917 1162 1234" data-label="Image"> </div> <div data-bbox="254 1335 1346 1558" data-label="Image"> </div>	
<p><b>Manufacturer</b></p> <div data-bbox="155 1705 615 1785" data-label="Image"> </div> <p>Quality engineered trench drain system</p>	<p><b>Specification</b></p> <p>MEA-JOSAM DUCTILE IRON GRATE WITH PROFIX SECURING FEATURE. FITS 100 AND 1000 SERIES CHANNELS. MEETS LOAD CLASS D. SUPPLIED BY TRENCH DRAIN SUPPLY.</p>
<p>DISCLAIMER - The customer and the customer's architects, engineers, consultants, and other professionals are completely responsible for the selection installation and maintenance of any product purchased from Trench Drain Supply and/or its manufacturers. TRENCH DRAIN SUPPLY MAKES NO WARRANTY, EXPRESS OR IMPLIED, AS TO THE SUITABILITY, DESIGN, MERCHANTABILITY, OR FITNESS OF THE PRODUCT FOR CUSTOMERS APPLICATION. The drawing and information provided remain the property and copyright of the manufacturer listed. The manufacturer reserves the right to modify specification without notice.</p>	

1-877-903-7246



www.trenchdrainsupply.com

<b>Number</b>  <b>153094</b>	<b>Series</b>  <b>CPS604</b> F Class Ductile Iron Grate EN1000
<div data-bbox="142 394 716 751"></div> <div data-bbox="824 449 1406 499"><p>NOTE: FREE AREA IS 30.9 SQ. IN. PER 1/2 METER SECTION</p></div> <div data-bbox="212 863 1463 1087"></div> <div data-bbox="212 1150 1227 1556"></div>	
<b>Manufacturer</b>   Quality engineered trench drain system	<b>Specification</b>  .MEA-JOSAM DUCTILE IRON SLOTTED GRATE WITH 4 POINT LOCK AND 1000 SERIES CHANNELS. MEETS LOAD CLASS F REQUIREMENTS. SECURING FEATURE AND TWO TABS. SUPPLIED BY TRENCH DRAIN SUPPLY.
<p>DISCLAIMER - The customer and the customer's architects, engineers, consultants, and other professionals are completely responsible for the selection installation and maintenance of any product purchased from Trench Drain Supply and/or its manufacturers. TRENCH DRAIN SUPPLY MAKES NO WARRANTY, EXPRESS OR IMPLIED, AS TO THE SUITABILITY, DESIGN, MERCHANTABILITY, OR FITNESS OF THE PRODUCT FOR CUSTOMERS APPLICATION. The drawing and information provided remain the property and copyright of the manufacturer listed. The manufacturer reserves the right to modify specification without notice.</p>	



1-877-903-7246



www.trenchdrainsupply.com

<p><b>Number</b></p> <p><b>153095</b></p>	<p><b>Series</b></p> <p><b>CPS604</b></p> <p>F Class Ductile Iron Grate</p>
<div data-bbox="873 401 1386 722" data-label="Image"> </div> <p data-bbox="272 653 870 701">NOTE: FREE AREA IS 30.7 SQ. IN. PER 1/2 METER GRATE</p> <div data-bbox="253 842 1159 1159" data-label="Figure"> </div> <div data-bbox="253 1333 1360 1558" data-label="Figure"> </div>	
<p><b>Manufacturer</b></p> <div data-bbox="155 1707 615 1785" data-label="Image"> </div> <p>Quality engineered trench drain system</p>	<p><b>Specification</b></p> <p>MEA-JOSAM DUCTILE IRON GRATE WITH PROFIX SECURING FEATURE. FITS 100 AND 1000 SERIES CHANNELS. MEETS LOAD CLASS F. SUPPLIED BY TRENCH DRAIN SUPPLY.</p>
<p>DISCLAIMER - The customer and the customer's architects, engineers, consultants, and other professionals are completely responsible for the selection installation and maintenance of any product purchased from Trench Drain Supply and/or its manufacturers. TRENCH DRAIN SUPPLY MAKES NO WARRANTY, EXPRESS OR IMPLIED, AS TO THE SUITABILITY, DESIGN, MERCHANTABILITY, OR FITNESS OF THE PRODUCT FOR CUSTOMERS APPLICATION. The drawing and information provided remain the property and copyright of the manufacturer listed. The manufacturer reserves the right to modify specification without notice.</p>	